

# Stage 2 Report

EFRA 1/10<sup>th</sup> Off-Road Electric,  
EUROPEAN CHAMPIONSHIP

27<sup>th</sup> July – 1<sup>st</sup> August 2026



# Content

- 1. Introduction ..... 3
- 2. Location ..... 3
- 3. Contacts & Race Officials..... 4
- 4. Emergency details ..... 4
- 5. Tyres ..... 4
- 6. The Track ..... 5
- 7. Rostrum ..... 6
- 8. Pitting..... 7
- 9. Race Control ..... 7
- 10. Technical Inspection..... 8
- 11. Radio Compound..... 8
- 12. Marshalling..... 8
- 13. Warm-Up Race ..... 8
- 14. Practice Availability ..... 8
- 15. Getting to ERT-Steyregg..... 9
  - a. Getting there by Car ..... 9
  - b. Getting there by train ..... 9
  - c. Close by Airports..... 10
  - d. Car Hire ..... 10
- 16. Hotels ..... 10
- 17. Camping & Caravan..... 11
- 18. Catering ..... 11
- 19. Local Amenities ..... 12

## 1. Introduction

The club ERT-Steyregg (Electro Racing Team Steyregg) was founded in 1987 by a group of enthusiastic model car drivers and started its first full season in 1988. Starting with Electric offroad only the club moved 1997 to its current location where an outdoor On-Road and Off-Road track was built. In 2017 the track surface changed from dirt to Astro turf to suit the ongoing development of the cars and for easier maintenance. At this point in time ERT-Steyregg was the first Astro turf track in Austria.

During the over 35 years of the existence of the club several events are held throughout the year and the venue is known for multiple national championship races as well as several international races. Like the Tamiya On-Road Euros with over 100 participants in 2015 or as a host venue of the EOS in 2019.

The venue features a 45x28m big Astro turf track with permanent race control, pit space for 50 drivers including AC connection, a 15m wide rostrum, cafeteria and toilet facilities. Camping during events is possible on-site.

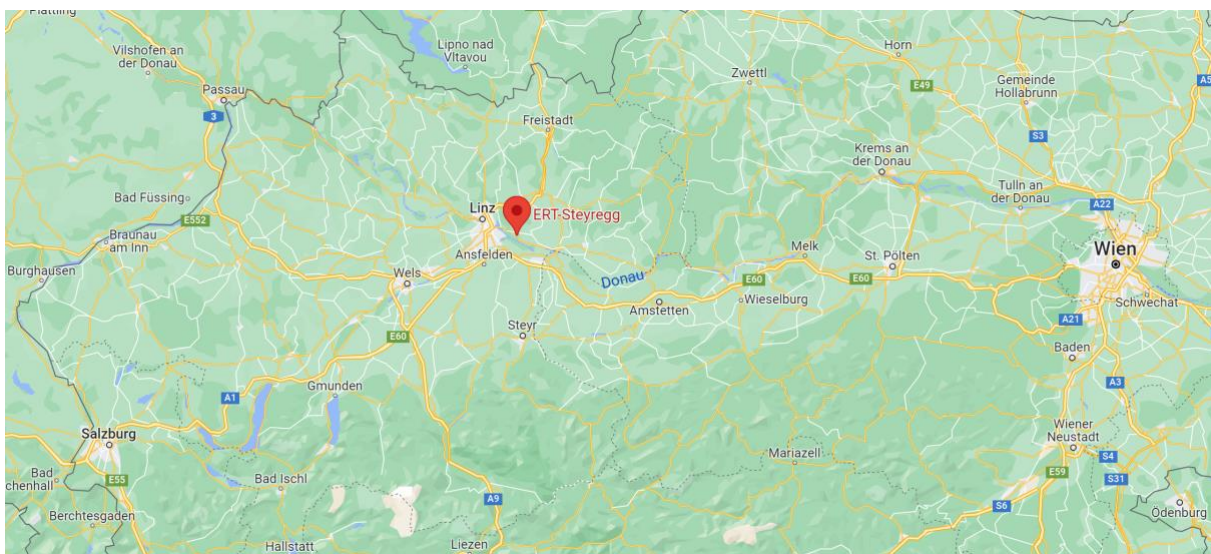
For the EUROS a temporary pit area for the according number of drivers will be installed including tables and chairs for each competitor.

## 2. Location

The track is located in between Salzburg and Vienna close to the city of Linz in the center of Austria.

The physical address is close to Pulgarn, 4221 Steyregg

<https://goo.gl/maps/9V1J5jUjcC5WTBANA>



### 3. Contacts & Race Officials

Event coordinator:	Tristan Hackl <a href="mailto:schriftfuehrer@ert-steyregg.at">schriftfuehrer@ert-steyregg.at</a> +43 664 1122955
Club chairman:	Roland Röck <a href="mailto:obmann@ert-steyregg.at">obmann@ert-steyregg.at</a> +43 664 5120800
Race Director:	Tristan Hackl
Timekeeper:	Andreas Hupfau
Technical Inspection:	Christian Wukonig
National Referee:	Markus Winkler

### 4. Emergency details

Educated first-aid persons will be on-site as well as first-aid kits will be available during the event.

The next accident and emergency hospital is 8.9km (10min) away from the track:  
AUVA Unfallkrankenhaus Linz, Garnisonstraße 7, 4010 Linz

In case of fire or LiPo failure sand buckets and fire extinguishers are available on track.

### 5. Tyres

Tyres:

2WD & 4WD Rear:	#003-0721 Pair of 1/10 Tyres V1 Astro 4WD/2WD Rear Medium
4WD Front:	#003-0481 Pair of 1/10 Tyres Carpet 4WD Front Low Profile Medium V1
2WD Front:	#003-0321 Pair of 1/10 Tyres Carpet Front 2WD Medium

Inserts:

2WD & 4WD Rear:	#003-0504 PAIR OF REAR INSERTS 2WD/4WD (grey)
4WD Front:	#003-0503 PAIR OF FRONT INSERTS 1/10 4WD (grey)
2WD Front:	NO INSERT ALLOWED

There will be no wet tyre compound – The above mentioned tyres will be used in dry and wet conditions.

## 6. The Track

The track features and area of around 45x28m has an Astroturf surf without filling. The grip conditions are considered from medium to high. The main straight is located on the opposite side to the rostrum. The layout features several elevation changes, cambered sweeping and tight corners, several double jumps, a step-up jump and the possibility of running different layouts for 2WD and 4WD.



## 7. Rostrum

The rostrum features a space of around 15x2,5m and is ~3m high. Additionally the drivers are protected by a roof. A permanent speaker system is installed and during events result screens are placed on the rostrum. Accessibility to the rostrum is given by two individual stairs on each side of the rostrum.



## 8. Pitting

A permanent pit area including electricity at all places for 50 people is installed and can be used prior to the event on practices days. For the Euros additional pit space will be installed. This area will feature enough tables and benches for all drivers including 230V power outlets. Accessibility by car close by for unloading will be given!



## 9. Race Control

Next to the rostrum a permanent race control container is available. It features all the necessities like PA control, electricity, window with the timing loop in front and network connection. A UPS power back up is available as an electricity back up to the timing system.

## 10. Technical Inspection

A scrutineering area below the rostrum will be installed on the way from the pits area to the access of the rostrum. It will be covered by a tent and include a gluing area for the tires.

## 11. Radio Compound

Like at other events in the recent years no transmitter compound is planned for the event.

## 12. Marshalling

The marshal points will be positioned around the track in safe places without affecting the visibility from the drivers.

Stand-By Marshals provided by the club will be available throughout the event in case groups need to be filled up.

## 13. Warm-Up Race

There will be a Warm-Up Race from Friday 22.05.2026 – Sunday 24.05.2026.

Details can be found in the Race Announcement letter.

Due to organizational reasons the Warm-Up Race will be limited to 50 people!

## 14. Practice Availability

Practice is generally available every day – Registration is necessary to confirm final availability!

Contact: Christian Wukonig – Whatsapp: +43 6765747480

Price: 15€ / Day

Important Info: Until End of April the track will be closed Friday & Saturday for maintenance!

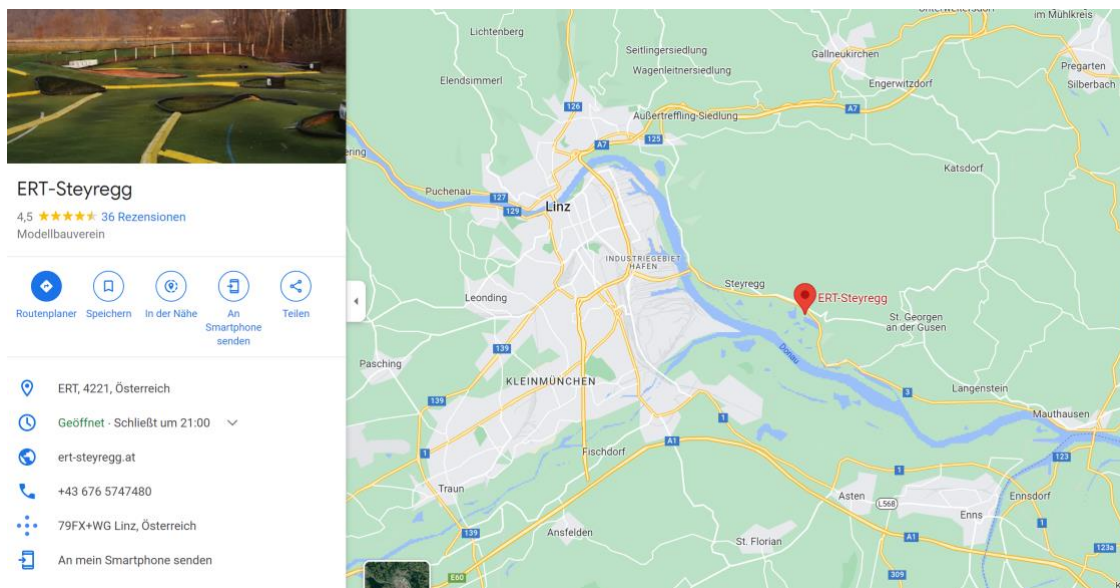
## 15. Getting to ERT-Steyregg

The club is located just a couple of minutes from Linz in Upper Austria and is easy to find next to a Main Road.

### a. Getting there by Car

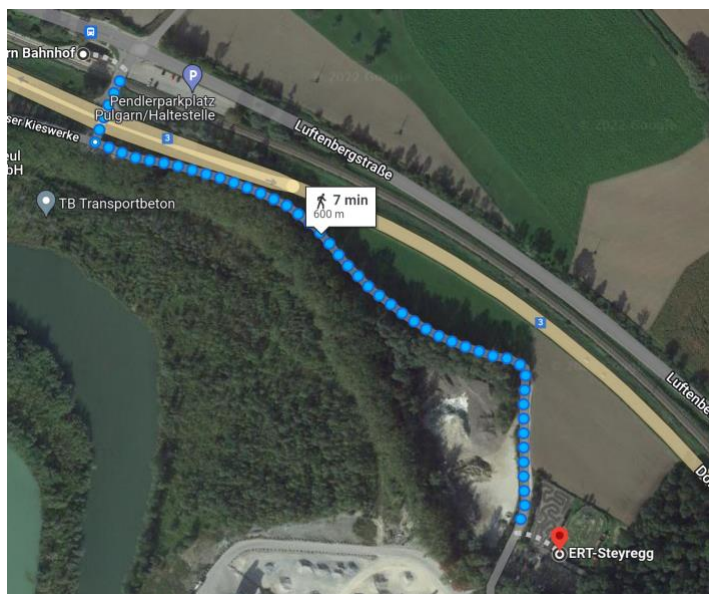
Alongside the B3 road between Linz and Mauthausen.

<https://goo.gl/maps/xrsAfQWwSFvrjSu9>



### b. Getting there by train

The next train station “Pulgartn Bahnhof” is only a 7 minutes’ walk from the track.



### c. Close by Airports

**Airport Linz (LNZ)** – 20km

**Airport Salzburg (SZG)** – 145km

**Airport Vienna (VIE)** – 200km – direct train from the Airport to Linz available

**Airport Munich (MUC)** – 245km

### d. Car Hire

Several car rental companies are operating at Linz Airport

Avis Budget: +43 7221 6006301

Europcar: +43 1 8661640

SIXT: +43 1 505264004

## 16. Hotels

Several international hotel chains are present in Linz and are only around 10-15min from the track. Another option are hotels around Mauthausen also around 10min away from the track.

harry's home Linz Urfahr, Donaufeldstraße 3, 4040 Linz <https://linz-urfahr.harrys-home.com>

ARCOTEL Nike Linz, Untere Donaulände 9, 4020 Linz <https://nike.arcotel.com/de/>

ibis Styles Linz, Wankmüllerhofstr. 37, 4020 Linz

Courtyard by Marriott Linz, Europaplatz 2, 4020 Linz <https://www.marriott.com/en-us/hotels/lnzcy-courtyard-linz/overview/>

Weindlhof, Kirchenweg 12, 4310 Mauthausen, <http://www.weindlhof.at/>

DONAUHOF Hotel, Promenade 30, 4310 Mauthausen, <https://www.donau-hof.at/>

Gasthof Maly, Machlandstr. 1, 4310 Mauthausen, <http://www.maly.co.at/>

## 17. Camping & Caravan

Please note that camping at the venue will only be possible to a very limited extent. Unfortunately, shower facilities will not be available. The originally planned solution is not financially feasible, as the costs would exceed typical hotel accommodation expenses.

If you are interested in bringing a caravan or motorhome, please contact us at:

[schriftfuehrer@ert-steyregg.at](mailto:schriftfuehrer@ert-steyregg.at)

As an alternative, there is a campsite at Au an der Donau, approximately 15 minutes from the venue.

<https://www.camping-audonau.at/>

Please also note that due to the nearby floodplain area (Augebiet), there are usually many mosquitoes in the evenings. We kindly ask you to take this into consideration.

## 18. Catering

A permanent cafeteria on-site will provide daily freshly made meals and sell snacks and drinks. It is run directly by the club and an external catering for food.

## 19. Local Amenities

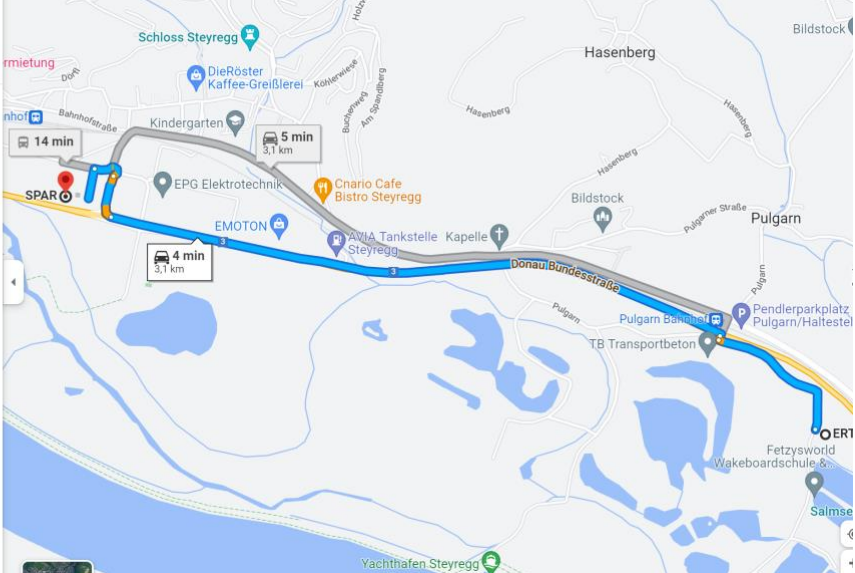
The next bigger village is less than five minutes away and alongside the main road many supermarkets, shops and gas stations can be found.

4 min (3,1 km)  
über Donau Bundesstraße/B3  
Die aktuell schnellste Route aufgrund der Verkehrslage

**ERT-Steyregg**  
ERT, 4221, Österreich

- Nach Norden Richtung Pulgarn starten  
550 m
- Rechts abbiegen auf Pulgarn  
14 m
- An der 1. Querstraße links abbiegen auf Donau Bundesstraße/B3  
2,2 km
- Leicht rechts abbiegen auf Pleschinger Str.  
160 m
- Im Kreisverkehr dritte Ausfahrt (Linzer Str.) nehmen  
120 m
- Nach links abbiegen, um auf Linzer Str. zu bleiben  
100 m

**SPAR**  
Linzer Str. 16a, 4221 Steyregg, Österreich



The map displays a route starting from ERT-Steyregg (ERT, 4221, Österreich) and heading north towards Pulgarn. The route is marked with a blue line and includes several key points of interest: SPAR (a supermarket), EPG Elektrotechnik, Cnario Cafe/Bistro Steyregg, and the AVIA Tankstelle Steyregg. The route also passes through Hasenberg and Bildstock. The map shows the Donau Bundesstraße/B3 and other local roads like Pleschinger Str. and Linzer Str. The distance from the starting point to the SPAR is 3.1 km, and the total route to Pulgarn is 4 minutes.

