

STAGE 1 REPORT



New South Wales Radio Control Racing Car Club (NSWRCRCC.Inc)

'The John Grant International Raceway'

Helles Park, Helles Avenue, Moorebank NSW 2170

PO Box 6141, Hammondville NSW 2170

WEB: www.nswrcrcc.com



21st - 27th October 2024



CONTENTS

ABOUT THE CLUB:	3
ABOUT THE VENUE:	3
DETAILS OF HOST CLUB:	4
CONTACTS FOR CORRESPONDENCE :	4
DETAILS OF VENUE LOCATION :	5
VENUE PROXIMITY OVERVIEW :	5
NSWRCCRCC LOCATION VIDEO :	5
VARIOUS RULES AND HOMOLOGATION LISTS :.....	6
PROPOSED TIMETABLES :	6
RACE OFFICIALS :	6
FREQUENCIES TO BE USED :	7
PROPOSED CONCOURSE :	7
ACCOMODATION OPTIONS :	8
TRANSPORT TO AND FROM ACCOMODATION :.....	8
MAINS POWER PROVISION AND SPECIFICATIONS :.....	8
CONTROLLED FUEL :1/5 Tourer Worlds &1/5 F1 World Cup.....	9
TIMING SYSTEM : 1/5 Tourer Worlds &1/5 F1 World Cup.....	9
EVENT SPONSORS :	10-
LIVE STREAMING COVERAGE :	11
COMMENTARY :	11
FACILITY PICTURES :.....	12-14
SYDNEY ATTRACTIONS.....	15-16

ABOUT THE CLUB:

Our club has over 40 years history and as the founder for on-road gas powered model car racing in Australia and the Association of Australian Radio-Controlled Model Car Clubs (AARCMCC, now known as Remote Control Racing Australia, RCRA) we have a long term and entrenched commitment to the ongoing development and growth of on-road model car racing in Australia.

Our Club has world class and compliant facilities, an innovative and diverse range of members and a committee all of which are committed to providing the best model car racing club and facilities anywhere in Australia.

NSWRCRCC is home to the only purpose built on road model car racing track for Nitro and Large-Scale cars in NSW and is host to major State, National and International events (e.g., 2001 1/8 IC On-Road IFMAR World Championship).and the 2023 GT Worlds. We also host regular club days and a range of sponsored race meetings annually

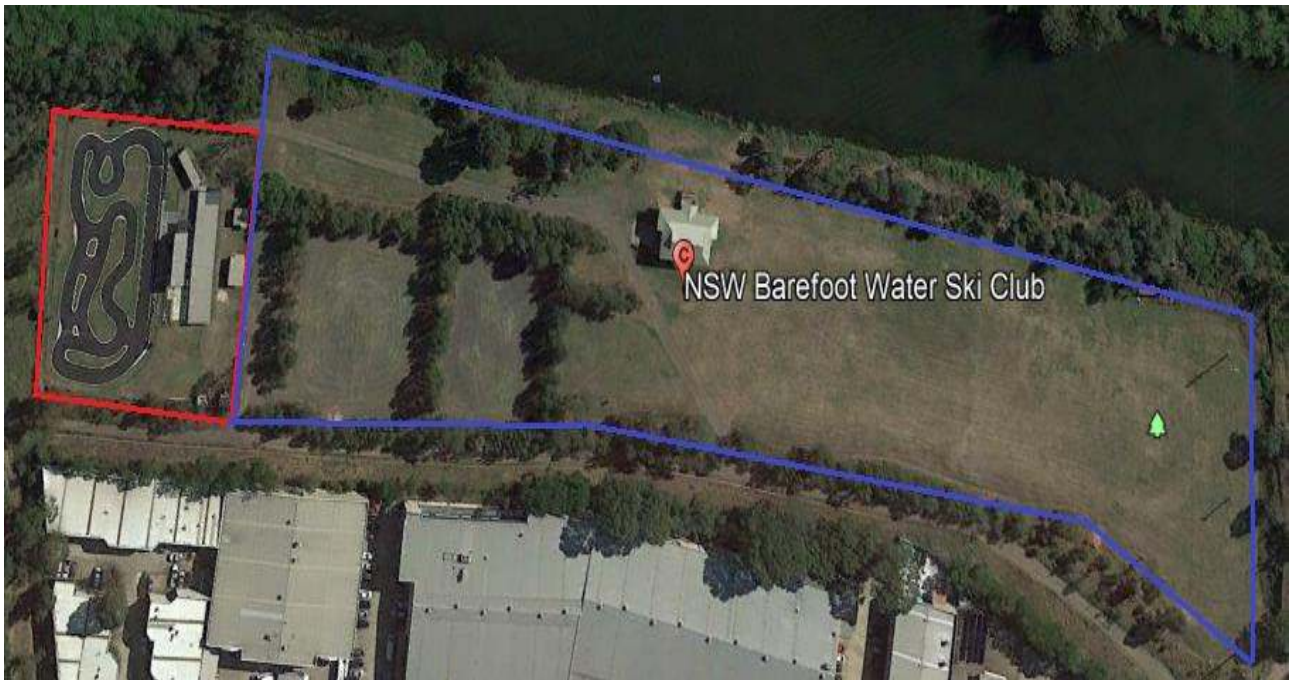
ABOUT THE VENUE:

Situated in almost 10 acres (~40000sqm) of Helles Reserve is the John Grant International Raceway, home of the New South Wales Radio Controlled Racing Car Club since 1991. The large reserve in which the Club is situated provides for a substantial overflow area to support the requirements of major events. There is no other venue in Australia that remotely comes close the offering such opportunity.

The venue offers what is renowned as the most technically challenging and fast flowing RC racing track in Australia. The purpose-built track is home to Nitro (1/10 & 1/8) and Gas (1/5) powered on-road RC cars.

Supporting this internationally renowned RC racing facility is a bucket list of supporting services which provide arguably the best RC on-road racing location in Australia, these include:

- Fully stocked permanent canteen
- Permanent race control (and soon to come elevated race control/referee building)
- Meeting rooms
- Permanent, large and undercover scrutineer facility
- Permanent male and female toilets
- Large elevated public viewing areas and undercover grandstand
- Protected and sheltered marshalling locations
- Grassed out and in-fields
- The largest of tyre truing and car cleaning facilities in Australia
- Substantial and vast parking options
- Largest drivers stand in Australia 15.5mtrs at 3.5mtrs high
- A fully raised pit lane with a level pitting area of ~20mtrs mitigating the serious risk of trips and falls.
- Trackside pitting area is more than double that of any other facility in Australia. With almost 80sqm there is an unrivalled amount space meaning the avoidance of cramping that can be seen at other venues when multiple pit crews and officials are forced to share much smaller areas
- Permanent pits for 96 drivers allowing for 1200mm x 600mm per entrant. Ample room to setup another 50-100 undercover pit tables
- Modern timing and PA systems
- 6 or more live timing screens (including 2 in the pits for race teams and their mechanics)
- Lights allowing for night racing
- Permanent and live video streaming
- Permanent car cleaning and washing facilities



Red shows facility compound

Blue shows area (8 acres) available to be used for parking, extra facilities, camping, etc

DETAILS OF HOST CLUB:

Club: New South Wales Radio Controlled Racing Car Club .Inc
Name: The John Grant International Raceway
Location: Helles Park, Helles Avenue, Moorebank NSW 2170
GPS Ref: -33.938558, 150.920342
Commenced: 1979 (operating for over 40 years)
Website: www.nswrcrcc.org.au
Facebook: New South Wales Radio Controlled Racing Car Club

CONTACTS FOR CORRESPONDENCE:

Primary contact:

Name: Joseph Patane
Role: President
Email: President@nswrcrcc.org.au
Mob: 0416 103030

Secondary contact:

Name: Michael Stone
Role: Treasurer
Email: Treasurer@nswrcrcc.org.au
Mob: 0430 460864

DETAILS OF VENUE LOCATION:

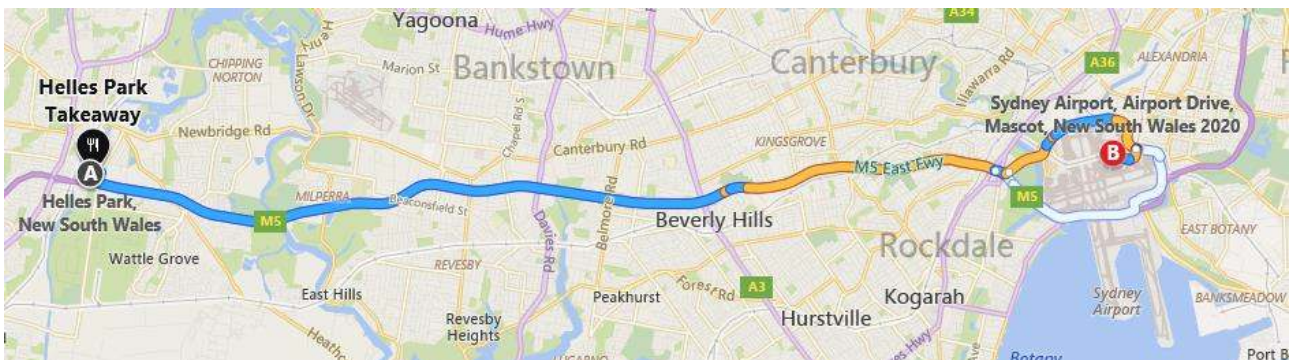
Location: Helles Park, Helles Avenue, Moorebank NSW 2170
GPS Ref: -33.938558, 150.920342



VENUE PROXIMITY OVERVIEW:

Situated 28kml (35-40 minutes) west of the Sydney International Airport is the John Grant International Raceway.

- Driving is all highway
- Public train available to within 5-minute drive of the facility
- Taxi, Uber and other services are available



NSWRCRC Location Video- YouTube

LINKS TO VARIOUS RULES :

IFMAR 1/5th : <https://bit.ly/3vRZP2D>

The main IFMAR 1/5 Scale Worlds will be hosted 20th-27th October

SCHEDULE TBC

RACE OFFICIALS TBC

FREQUENCIES TO BE USED:

In Australia the below frequencies and systems are permitted use:

- 27mhz
- 29mhz
- Spectrum systems
- 2.4ghz

PROPOSED CONCOURSE:

It is proposed to convene a traditionally styled concourse selecting the best presented painted car that recognises the best artistic and creative effort.

A VIP, likely the Local Mayor, State Member or Sports Minister will make the choice for the concourse car.

The concourse will be conducted as part of a professionally coordinated opening ceremony that recognises each Country individually.

ACCOMODATION OPTIONS:

- IBIS Budget Casula/Liverpool, 3.5 star (within 10 minutes)
- Best Western Casula Motor Inn, 4.5 star (within 20 minutes)
- Astra Apartments Liverpool, 4.5 star (within 10 minutes)
- Holiday Inn Warwick Farm, 4 star (within 10 minutes)
- Mercure Sydney Liverpool, 4.5 star (within 20 minutes)
- The Williams Inglis Hotel, 4.5 star (within 25 minutes)
- Comfort Inn Hunts Liverpool, 3 star (within 10 minutes)
- El Toro Motor Inn Warwick Farm, 2.5 star (within 20 minutes)

Also:

- Limited camping on site is available at no cost across almost 8 acres of gated parkland. Power can be supplied. Subject to demand toilet and shower facilities will be provided.
 - Motorhomes and Caravans welcome
 - Prior booking/notification is essential

TRANSPORT TO AND FROM ACCOMODATION:

There is a range of public and private sector transport options available to and from all listed accommodation locations. Below is a list of rental car options

Avis Car Hire: <https://bit.ly/3qQZT0a>
Thrifty Car Rental : <https://bit.ly/3PinCji>
East Coast Car Rentals : <https://bit.ly/3PfGiAf>
Uber Carshare : <https://bit.ly/3L0un6R>

MAINS POWER PROVISION AND SPECIFICATIONS:

240 -volt, 10amp power sockets are permanently available to all pitting benches with the below

configuration:



12v DC power is available to the tyre truing facility which can accommodate up to 12 people at a ny time

CONTROLLED FUEL:

1/5 Tourer Worlds & 1/5 F1 World Cup



Controlled fuel for the 1/5 Tourer Worlds and 1/5 F1 World Cup will be BP 98RON

This will be available at the track for purchase.

Due to weekly change of fuel price, the cost will be announced as we get closer to the event.

TIMING SYSTEM: 1/5 TOURER WORLDS

MyRCM will be the timing system.

Tires for the 1/5 Tourer and 1/5 F1 will be up to the drivers .

EVENT SPONSORS

**TO
BE
ADVISED**

1/5 SCALE WORLD EVENT COVERAGE

live Streaming Broadcast for the IFMAR 2024
1/5 Scale Worlds will be notified as we get
closer to the event.

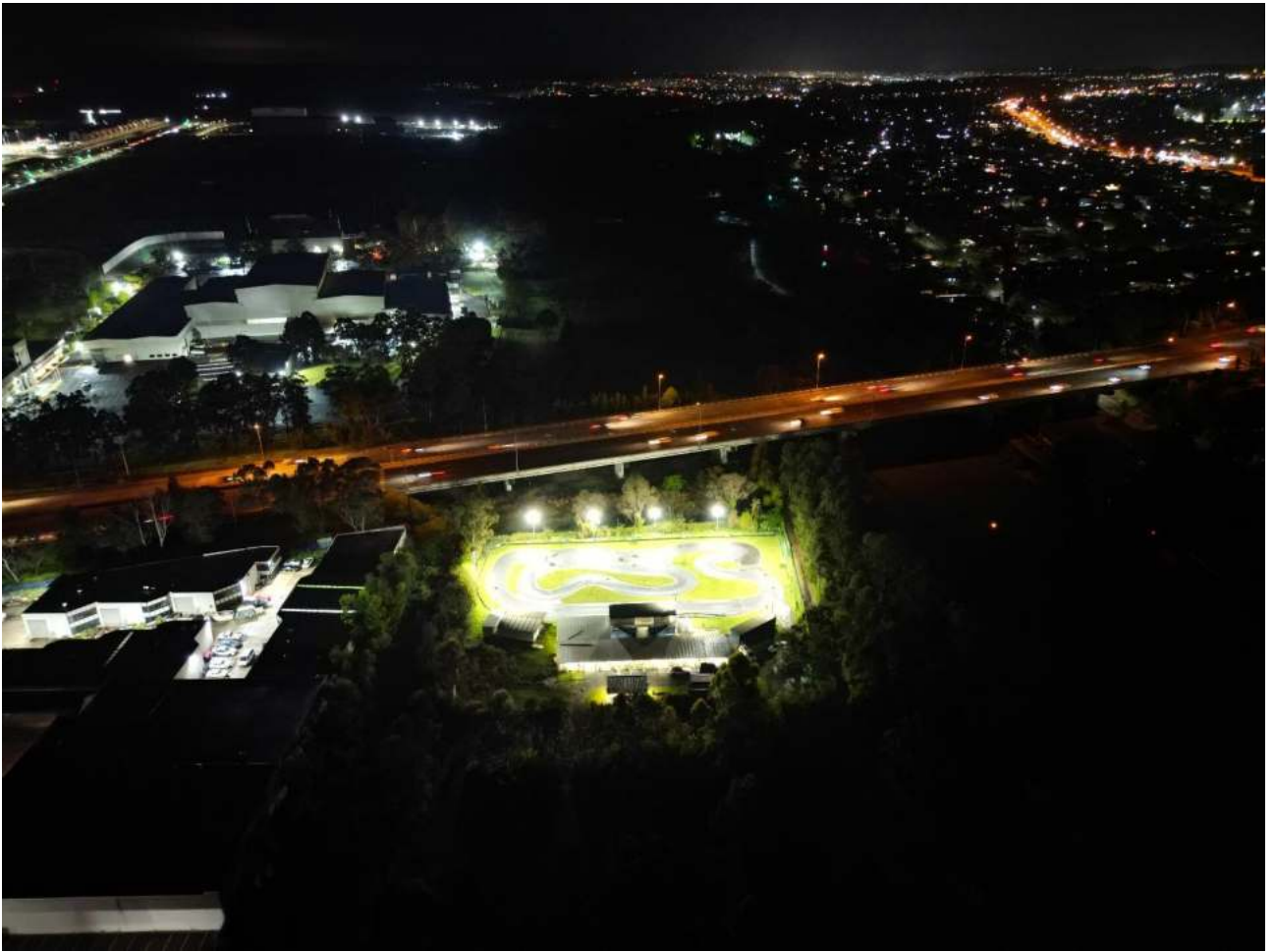
1/5 Scale Worlds Commentary

Commentary for the IFMAR 2024 1/5 Scale
Worlds will be notified as we get closer to
the event

FACILITY PICTURES:







<p>SEA LIFE Sydney Aquarium</p>		<p>1-5 Wheat Rd Sydney</p>	<p>https://www.visitsealife.com/sydney/</p> <p>SEA LIFE Sydney Aquarium is a public aquarium that features a large variety of Australian aquatic life.</p>
<p>Taronga Zoo Sydney</p>		<p>Bradleys Head Rd, Mosman</p>	<p>https://taronga.org.au/sydney-zoo</p> <p>Taronga Zoo Sydney's beautiful outdoor harbourside location provides you with the chance to connect with our animals and nature and enjoy time safely with family and friends.</p>
<p>Luna Park</p>		<p>1 Olympic Dr, Milsons Point</p>	<p>https://www.lunaparksydney.com/</p> <p>Luna Park is a harbour-side amusement park that still contains traditional midway games and rides</p>
<p>Madame Tussauds</p>		<p>1-5 Wheat Rd, Sydney</p>	<p>https://www.madametussauds.com/sydney/</p> <p>Madame Tussauds Sydney is a wax museum located in Darling Harbour in Sydney.</p>
<p>Sydney Zoo</p>		<p>700 Great Western Hwy, Eastern Creek</p>	<p>https://sydneyzoo.com/</p> <p>Sydney Zoo is home to over 4,000 animals, Australia's largest Reptile and Nocturnal House and an aquarium.</p>
<p>Featherdale Wildlife Pare</p>		<p>217 Kildare Rd, Doonside</p>	<p>https://www.featherdale.com.au/</p> <p>The park contains various species native to Australia and is known to be one of the world's largest collections of Australian fauna.</p>
<p>Archie Brothers</p>		<p>75 O'Riordan St, Alexandria</p>	<p>https://www.archiebrothers.com.au/</p> <p>With arcade games, bowling, virtual reality, laser tag, bumper cars, and a bar - Archie Brothers Alexandria has something for everyone.</p>

Scenic World	 <p>SCENIC WORLD BLUE MOUNTAINS AUSTRALIA</p>	Violet St &, Clif Dr, Katoomba	<p>https://www.scenicworld.com.au/</p> <p>Scenic World is renowned for providing the ultimate Blue Mountains adventure - from native birdlife and fresh air to breathtaking views of the World Heritage-listed region including the Three Sisters, Katoomba Falls and Jamison Valley</p>
Sydney Tower Eye	 <p>The Sydney Tower Eye</p>	Westfield Sydney, Level 5/108 Market St, Sydney	<p>https://www.sydneytowereye.com.au/</p> <p>Sydney Tower Eye, also known as Centre Point Tower, is the tallest structure in Sydney, New South Wales, Australia, and the second-tallest observation tower in the Southern Hemisphere</p>
Maritime Museum	 <p>MUSEUM AUSTRALIAN NATIONAL MARITIME MUSEUM</p>	2 Murray St, Sydney	<p>https://www.sea.museum/</p> <p>The museum presents a changing program of stimulating exhibitions and events to share Australia's maritime history and connect the stories, objects, people, and places that are part of our country's narrative.</p>
Bridge Climb	 <p>BRIDGECLIMB SYDNEY</p>	3 Cumberland St, The Rocks	<p>https://www.bridgeclimb.com/</p> <p>See Sydney at its best - take the Climb of Your Life with Bridge Climb Sydney!</p>
Raging Waters		427 Reservoir Rd, Prospect	<p>https://www.ragingwaterssydney.com.au/</p> <p>Raging Waters Sydney, formerly Wet'n'Wild Sydney, is a water park in the greater western Sydney suburb of Prospect</p>